



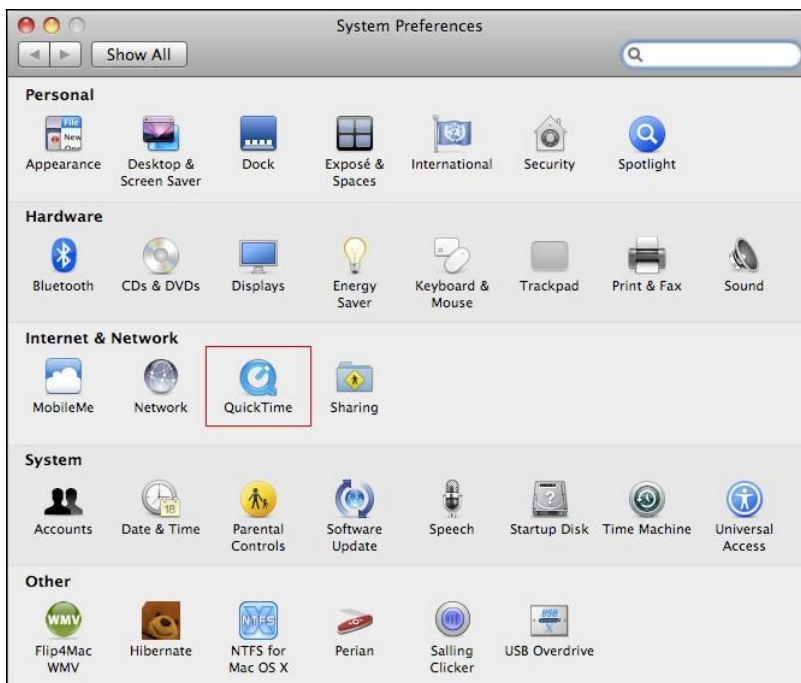
## Instructions for Accessing the Kickapoo Ranch Pet Resort Pet Cam

We are excited to provide you with access to our Pet Cam which will allow you to see your dog during his or her stay with us!

### Instructions for Mac OS X

Remote access to the Kickapoo Ranch Pet Resort Pet Cam using the Mac OS X, will require modification of certain default Mac settings.

1. On Mac OS X, open **Quick Time** preference panel from **System Preferences**.



2. Click the **Advanced** tab, and select **Custom** from the Transport Setup drop-down list.

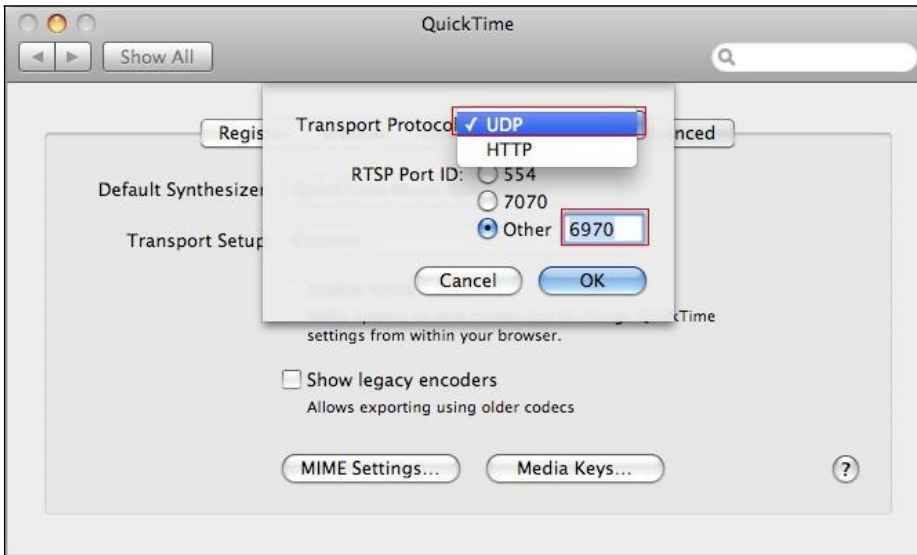


For Assistance Call Kickapoo Ranch Pet Resort at 936-931-9480



### Instructions for Accessing the Kickapoo Ranch Pet Resort Pet Cam

3. Select **UDP** from the Transport Protocol drop-down list.
4. In the RTSP Port ID field, select **Other** and type **6970**.



5. Open your browser and go to <http://www.kickapooranchpetresort.com>.
6. Click on the "Pet Cam" link in the upper left corner.
7. Enter your ID \_\_\_\_\_ and password \_\_\_\_\_. Click Login.
8. Click JPEG Image Viewer on the left and view the Pet Cam on the right.

